

EGON SCHIELE

Egon Schiele (1890 – 1918) was an Austrian painter. His work is noted for its intensity, and the many self-portraits that he produced.



The twisted body shapes and the expressive line that characterize Schiele's work mark the artist as an early Expressionist.

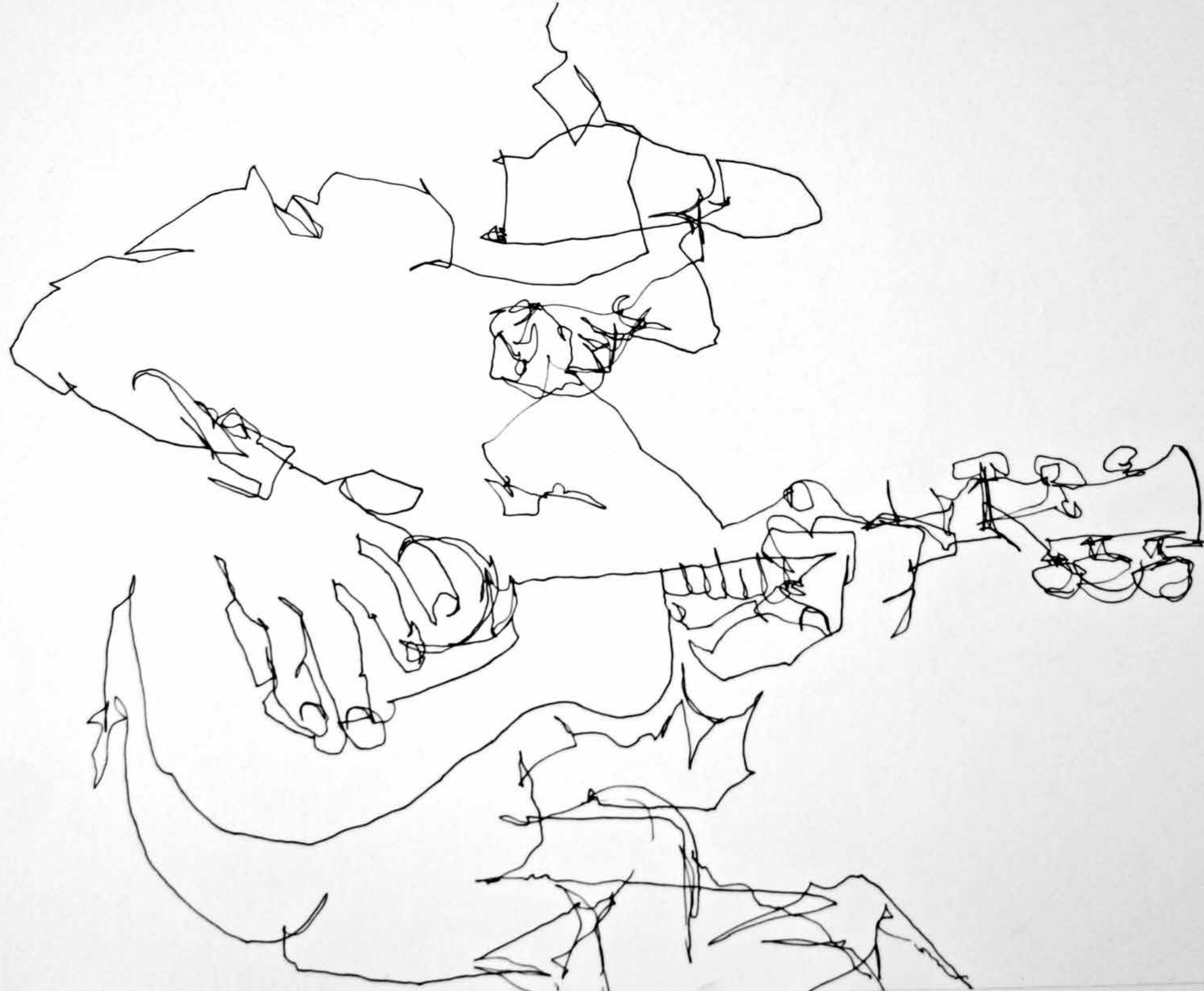


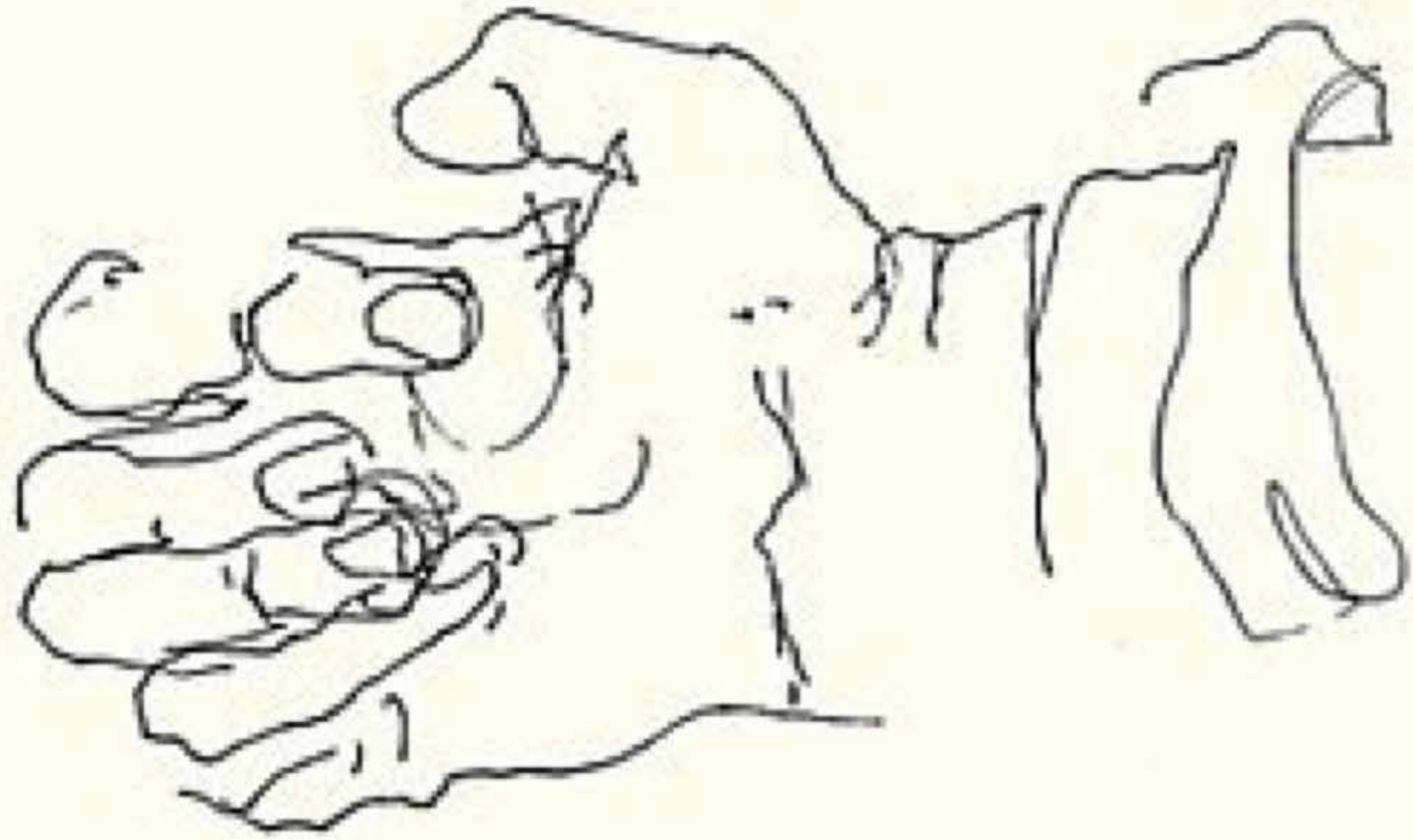
BLIND CONTOUR DRAWING

Blind contour drawing is a method of drawing when an artist draws the contour of a subject without looking at the paper. The technique improves drawing skills since it causes the artist to use both senses of sight and touch.









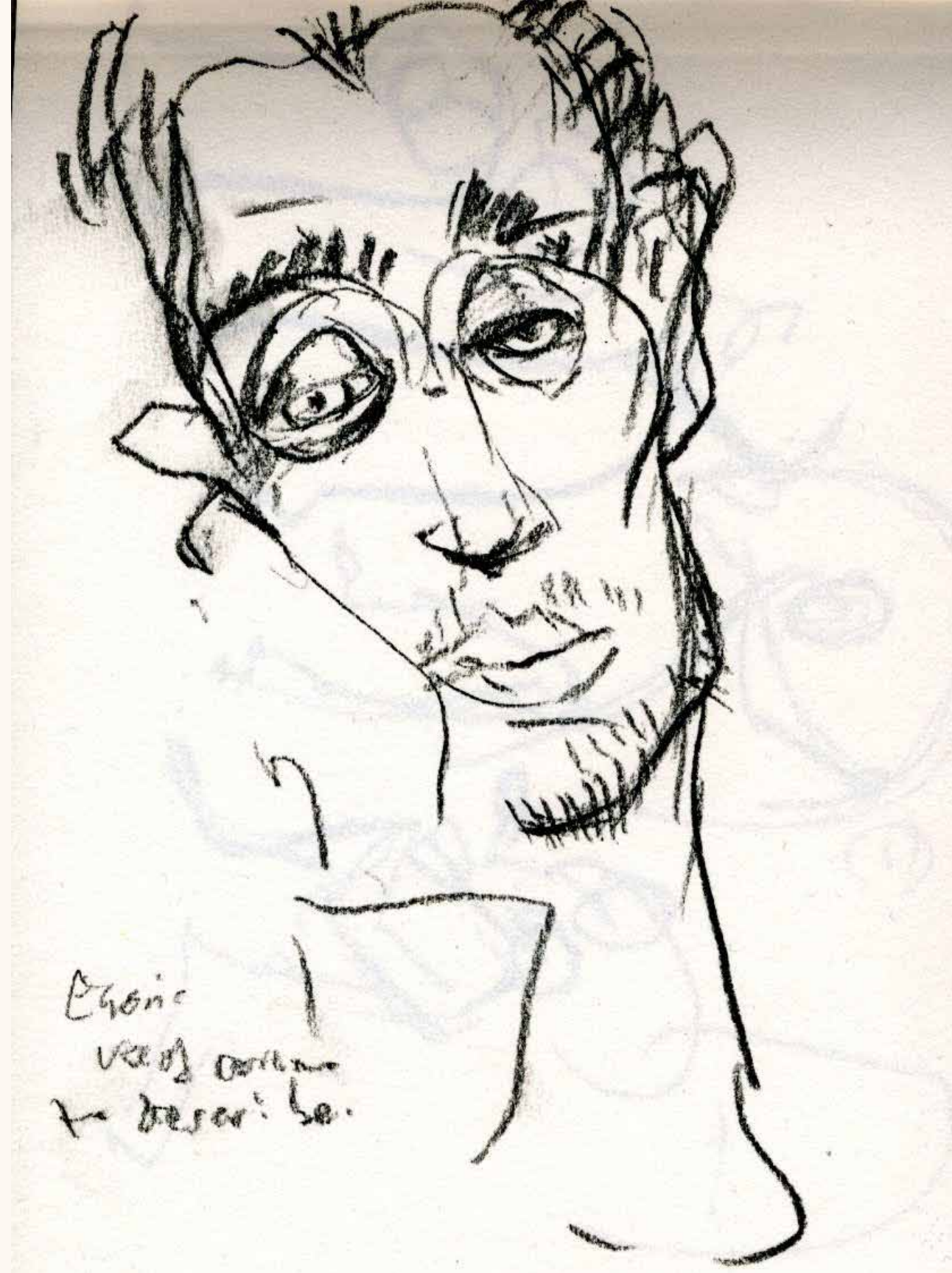
CONTOUR DRAWING

Contour drawing is when the artist draws lines to show the outline of a subject. The purpose of contour drawing is to emphasize the mass and volume of the subject rather than the detail; the focus is on the outlined shape of the subject and not the minor details.







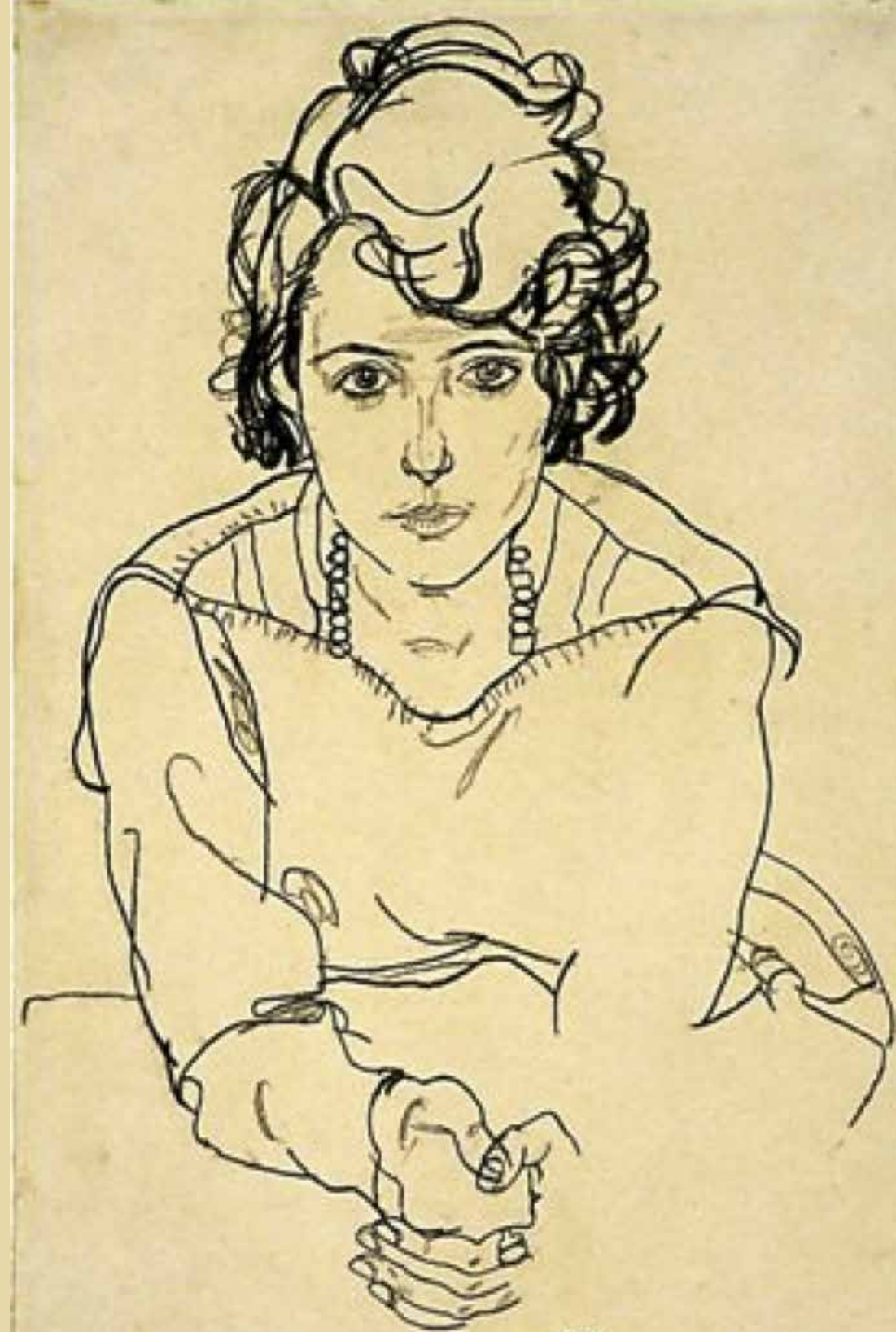


Chronic
very common
to describe.









Egon Schiele - The Complete Works

